

PRIDE-EXCELLENCE-FAMILY-COMMITMENT



**2021-2022  
BAND HANDBOOK**

Lee Hughes, Director of Bands  
Bryant Ramey, Associate Director of Bands  
Jeffrey Lepa, Associate Director of Bands

# **Table of Contents**

## **Membership**

*Pages 3 - 6*

## **Hierarchy of Leadership**

*Page 7*

## **Ensemble Outline**

*Pages 8-10*

## **Obligations Outline**

*Pages 11-13*

## **Band Booster Organization**

*Page 14*

## **Bear Card Fundraiser**

*Page 15*

## **Attendance and Grading**

*Pages 16-17*

## **Visual Definitions**

*Pages 18-21*

## **Band Social Media/Remind**

*Page 22*

## **Band Calendar**

*Page 23 and 25*

## **Band Handbook Contract**

**\*\*\*To be signed and returned\*\*\***

*Page 26*

# Robertsdale High School

Golden Bear Band  
1 Golden Bear Dr.  
Robertsdale, AL 36567

Dear Band Member and Band Parents,

Welcome to the **"Golden Bear Band"**!

We are very proud of our band program here at Robertsdale High School and are glad that you have chosen to be a part of our tradition. Our program includes many different performing ensembles consisting of the Marching Band, Visual Ensemble, Wind Ensemble, Symphonic Band, Concert Band, Jazz Band, Chamber Ensembles, Indoor Percussion, and Winter Guard. Each of these groups are very competitive and have won numerous awards in the Southeast region and nationally. You will not be disappointed in the quality of our program.

Parents, we hope to see you at all of our booster meetings. Our booster organization is integral to the financial success of this organization. Without strong support from our booster organization, we would not be able to function as one of the best music programs in our area.

The Golden Bear Band is fortunate to have outstanding instructors for each section. Your student will receive one-on-one attention in every ensemble. We are pleased to have Mark Foster, our Director of Percussion, and Marsha Foster, our Director of Color Guard, preparing our groups to represent the Golden Bear Band across the country.

We are pleased to welcome you to the **"Golden Bear Band"**.

Go Bears!

Lee Hughes  
Director of Bands  
Robertsdale High School  
[lhughes@bcbe.org](mailto:lhughes@bcbe.org)  
251-957-4154 Ext. 48019  
Cell: 251-298-7147

Bryant Ramey  
Associate Director of Bands  
Robertsdale High School  
[bramey@bcbe.org](mailto:bramey@bcbe.org)  
251-957-4154 Ext. 48019  
Cell: 251-289-9780

Jeffrey Lepa  
Associate Director of Bands  
Robertsdale High School  
[jlepa@bcbe.org](mailto:jlepa@bcbe.org)  
251-957-4154 Ext. 48019  
Cell: 251-270-1132

## **Robertsdale High School Band**

### Mission Statement

- To build a program based on PRIDE, EXCELLENCE, FAMILY, & COMMITMENT.
- To help educate, share, and foster the value of music education within our community.
- To develop all students into model citizens so they may be successful in future endeavors.
- To provide ALL students a first-class music education through meaningful performance.
- To work every day towards becoming the best band program.

### Membership:

- The Robertsdale Band program is an organization that provides musical experiences for all students of Robertsdale High School.
- All students are welcome to participate in this activity, provided they pass all audition requirements.
- **Members are required to participate both semesters.** For continued growth as musicians and ensembles, students are **REQUIRED** to be in marching band and a concert band. This is integral to the student and program. Auditions for band placement take place in May. Exceptions are made on a case by case basis. Also, class scheduling does not allow for schedule changes at the fall/spring semester split.
- Band Member Obligations: All-inclusive **except** – Band Jackets, concert attire, sticks, mallets, reeds and accessories (see obligation information for more details)
  - **Instrumental Obligations - \$240.00 per year**
  - **Percussion Obligations - \$390.00 Per Year**
  - **Instrument Rental/Checkout Obligation - \$50.00**
  - **Marching Band Shoes - \$35.00**
  - **Guard Obligations - \$175.00 per year**
    - **THIS DOES NOT INCLUDE ADDITIONAL APPAREL! *Please see the attached breakdown of additional guard apparel purchases.***
  - Winter Guard (an additional **\$350.00** that covers winter guard costs)
  - *A \$30 school activity fee is required for each class (per class) and is paid directly to the **front office** and is not part of the fees/obligations mentioned above.*
  - *Students are encouraged to participate in our monthly fundraisers to help keep our obligations low. Fundraisers occur throughout the year, beginning in the summer months.*
  - *The band program is self-sufficient. We primarily rely on fundraising and obligations to facilitate all expenditures in the band program.*

### Ensembles:

- The Band program provides for all aspects of a well-rounded band program including the "The Golden Bear Marching Band", Wind Ensemble, Symphonic Band, Concert Band, Percussion Ensemble, Jazz Band, Chamber Ensembles, and Winter Guard.

### Auditions (overview):

- Admission to the program requires an audition for all students on their instrument or equipment.
- Instrumental skills shall include scales/rudiments, technical exercises, and sight-reading ability, as well as hand/foot/eye coordination.
- Visual ensemble skills shall include fundamental flag technique, fundamental movement technique, and eye/hand/foot coordination.

### Rehearsals/Performances (overview):

- Once accepted, students are required to be in the band class they have been selected for.
- Students are also required to be in attendance at all scheduled rehearsals and performances.
- **ALL performances are MANDATORY.**
- All members of the marching band will be **required** to attend a music camp and band camp. Any student that has an **unexcused absence** will be dismissed from the program.
- These camps are a week or more in length, and up to 9 hours a day.
- Instructors are hired to give individualized instruction for these camps to facilitate the learning process.
- After-school rehearsals include Tuesday and Thursday until 5:30 p.m. for the full band– any rehearsal missed due to an unexcused absence can prevent you from performing. Habitual absences will prevent you from performing – regardless if excused or not.
- Fall performances include all football games, parades, pep rallies, concerts, and other performances scheduled.
- Spring instrumental ensembles include a minimal amount of after school rehearsals.
- The Competitive Percussion Ensemble and Winter Guard rehearse intensively after school.
- Performances include the state concert band assessment (MPA) and the spring concert, as well as, Mardi Gras parades and other concerts.
- Mardi Gras parades are integral in keeping our fees and obligations low.
- Percussion Ensemble, Winter Guard, and Jazz Band performances run from November to May.

### Health/Well-Being

- All members of the Robertsdale High School Band are responsible for protecting their hearing by using appropriate ear plugs in all rehearsals and performances. Students are highly encouraged to purchase hearing protection to prevent hearing loss.
- All members of the Robertsdale High School Band are expected to be in good physical condition. They understand that this is a physically demanding activity and that proper health must be maintained. Marching Band activities will include physical conditioning and exercise, as it counts as a PE credit activity.
- All members are expected to drink the appropriate amount of water each day and maintain a healthy diet. Students are expected to eat healthy meals before all rehearsals and performances. Student must bring their issued water bottle to all rehearsals and performances so that they can stay properly hydrated.
- All members are expected to wear appropriate clothing fit for outdoor activities during rehearsals or performances when a uniform is not mandated.

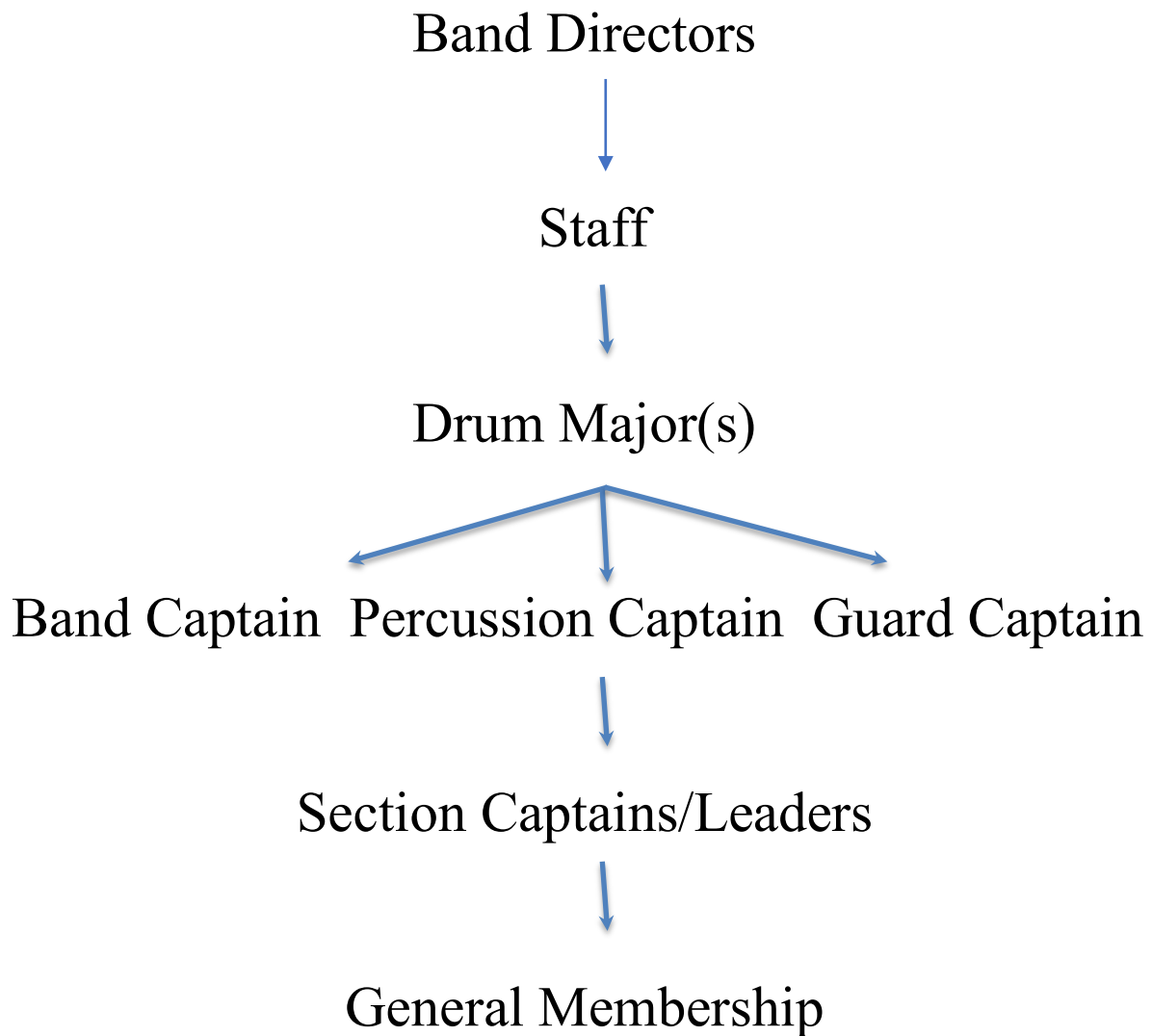
### Private Lessons

- Private Lessons are not required, but are ultimately the best way to get better on your instrument. Students make incredible progress when they study privately with an instructor.
- If a student is interested in Private Lessons, please see our website for a compiled list of local instructors or ask Mr. Hughes for further information.

### Student Leadership

- Band Leadership is made up of appointed and audition-based positions. Each student must submit an application form and interview. Drum Majors must audition.
- Appointed officers include:
  - Band Captain
  - Section Leaders
  - Librarians
  - Transportation Coordinator
  - Uniform Captain
- Drum Major: is an auditioned position and will be responsible for the conducting duties of the marching band, represent the band at competitions, visit other bands, and meet regularly with the other leadership staff to discuss the operations of the band program.

## *Hierarchy of Leadership*



## **Ensemble Outline**

### **"The Golden Bear Marching Band"**

- The marching band is a 190 plus member organization that performs for all football games, parades, pep-rallies, and up to four marching band competitions which includes:
  - wind instruments (brass/woodwind) that provides the music, both melodically and harmonically, and visual movement
  - percussion instruments that provide the rhythmic drive and stability
  - visual ensemble that provides the color and spectacle of the band through equipment use and dance
- The half-time/competitive show is designed to create a musical and visual journey that pertains to a specific emotion, story, or motivic thread.
- All sections of the band are treated as equals and no specific section is featured for any length of time.
- All members play a specific part or role in the production that is perfected from June to November.
- Marching Band Competitions are held from the end of September through early November and give an assessment of the growth of the program, and award students' hard work and achievement.
- Auditions for the marching band occur during the spring of the previous year.
- Wind instrumentalists audition for placement in their respective sections by showing their ability to perform scales, show technical mastery, and sight-reading ability to the band director.
- All percussion students will audition in March or April to be assigned their positions for the Fall.
- All percussion students will audition on rudiments/scales, technical exercises and show proper technique and sight-reading ability to the percussion instructor and those designated.
- Visual Ensemble students will be auditioned in March or April at an audition camp.
  - All visual ensemble students, new and returning, will be required to audition on flag, and learn fundamental movement techniques.
  - A routine will be taught during this camp and performed on the final day, as well as, showing proper technique in marching skills, and flag skills.
  - Selection of the members will be based on the overall ability of the students and the capability they show at the audition.
  - All members will perform with various pieces of equipment, and dance at various times in the half-time production.
  - The visual ensemble will be instructed by the visual ensemble instructor, chosen by the band director and those designated to assist.



## **Ensemble Outline Continued**

### **Wind Ensemble**

- The Wind Ensemble is the premier concert ensemble at Robertsdale High School.
- The audition will be conducted by the directors and takes place in May.
- This ensemble performs for state concert band assessment and other concerts December through May.
- This ensemble is conducted by the Director of Bands.
- This ensemble is open to all instrumentalists who meet the audition requirements.

### **Symphonic Band**

- The Symphonic Band is the second concert ensemble at Robertsdale High School.
- The audition will be conducted by the directors and takes place in May.
- This group will perform at state assessment and other concerts December through May.
- This ensemble is conducted by an Associate Director of Bands.
- This ensemble is open to all instrumentalists who meet the audition requirements.

### **Concert Band**

- The Concert Band is the third concert ensemble at Robertsdale High School.
- The audition will be conducted by the directors and takes place in May.
- This group will performs for state assessment and other concerts from December through May.
- This ensemble is conducted by an Associate Director of Bands.
- This ensemble is open to all instrumentalists who meet the audition requirements.

### **Percussion Ensemble**

- The percussion ensemble is an auditioned unit of the fall percussion ensemble.
- Auditions are based on the All-State requirements, reading ability, and technical skills.
- This ensemble also forms the percussion sections of the Wind Ensemble, Symphonic Band, and Concert Band. It competes as an independent ensemble at local, regional, and national competitions, and performs school and local concerts from August through May.
- The Percussion Ensemble will meet during the fall and spring, during school and after school. They will perform for all scheduled local, regional, and national competitions.
- All Percussion members are also required to participate in Mardi Gras parades and other full band functions requiring a Percussion Ensemble.

## **Ensemble Outline Continued**

### Winter Guard

- The Winter Guard is an auditioned unit of the fall visual ensemble.
- This group auditions in November and rehearses after school.
- All guard members are also required to participate in Mardi Gras parades and other full band functions that require a visual ensemble.
- The group will participate in various contests on Saturdays starting in December and ending in April

### Jazz Band

- The Jazz Band includes students that have an interest in learning the jazz repertoire.
- This ensemble meets during school.
- All instrumental students who are in band are welcomed to participate.
- This ensemble performs for concerts and school activities throughout the year.

### Chamber Ensembles

- Volunteer Based Ensembles
- Student Led
- Will perform at various concerts throughout the school year.
- Example Ensembles include: Saxophone Choir, Woodwind Choir, Woodwind Quintet, Brass Quintet, Brass Choir, etc.

# **Robertsdale High School Band Obligations 2021-2022**

## **1. Fundraising**

- General fund fundraising
  - The band program will have general fund fundraisers. All students must participate, regardless if they owe obligations.
  - These fundraisers allow our fees and obligations to remain one of the lowest in our activity.

## **2. Winds - \$240.00**

- Includes all band activities for the entire year
  - What does your Regular Band obligation pay for? – All regular season travel, uniform rental, upkeep and cleaning, basic equipment and facility usage, music, and all instruction.
- **Does not include personal items listed below and food items**
  - Tuxedo and concert dress for concert season (for new students)
  - Band shoes \$35 (for new students **or** if current students order replacement shoes)
  - Reeds, and other accessories
  - Extra Gloves- \$5/pair
  - Instrument Rentals \$25 per semester
  - Band Jacket - \$50
- (Note: there is a \$30.00 activity fee that must be paid in the main office for every band activity enrolled - This is not part of the \$240.00 band fee.)

## **3. Fall Guard Obligations - \$175.00 - \$485.00**

- Includes all fall guard activities for the entire year
  - What does your Regular Guard obligation pay for? (\$175.00) – All travel, equipment usage and upkeep, music, materials, and all instruction.
  - Extra Guard Apparel/Equipment (**REQUIRED, AND NOT COVERED BY FALL OBLIGATIONS**)
    - Fall Uniform - \$165.00
    - Guard Marching Shoes - \$35.00
    - Band Jacket - \$50.00
    - Tote Bag - \$35.00
    - Gloves - \$25.00
- \*All Items are required to participate and can be reused each year if they are in working order\*
- **Other Items not covered in your Obligations**
    - Fall or Spring Trip costs – TBA

#### **4. Winter Guard Obligation - \$350.00**

(guard members in the spring semester that are selected for this unit)

- Includes all winter guard activities
  - What does your Winter Guard Obligation pay for? – All travel, show design, basic equipment, and all instruction.
- Does not include personal items listed below and food items
  - T-shirt
  - Fall or Spring Trip costs – TBA
- Must be paid by February. A payment schedule will be published to those who participate.

#### **5. Percussion Obligation - \$390.00** (All Percussion Students)

- Includes marching season, concert, and percussion ensemble activities
  - What does your Indoor Percussion Obligation pay for? – All travel, basic equipment usage and upkeep, instruction, supplies, writing, band shirt, and music.
- Does not include personal items listed below and food items
  - Band Jackets
  - Other t-shirts and personal items
  - Personal sticks and mallets
  - Concert Attire
  - Fall or Spring Trip costs – TBA
- (Note: there is a \$30.00 activity fee that must be paid in the main office for every band activity enrolled - This is not part of the percussion ensemble fee.)
- Must be paid by December 1

**All regular band obligations must be paid by November 1.**

#### **Robertsdale High School Band Winds Obligation Pay Schedule**

*May 11 (Booster Meeting)*                      \$60.00

\*\*\*This is required to secure your spot in the show! \*\*\*

*June 1*    \$60.00

*July 1*    \$60.00

*August 1*    \$60.00

### **Instrument Rental Obligations**

<i>August</i>	<i>(Fall Semester Fee)</i>	\$25.00
<i>January</i>	<i>(Spring Semester Fee)</i>	\$25.00

### **Robertsdale High School Band Color Guard Obligation Pay Schedule**

<i>April 23</i>	\$165.00 (Fall Uniform)
***This is required to secure your spot in the show! ***	
<i>May 11</i>	\$175.00 (Fall Obligation)
<i>June 1</i>	\$60.00 (Tote Bag and Gloves)
<i>August 1</i>	\$35.00 (Guard Shoes)
<i>September 9</i>	\$50.00 (Band Jacket)

### **Robertsdale High School Band Percussion Obligation Pay Schedule**

<i>May 11 (Booster Meeting)</i>	\$60.00
***This is required to secure your spot in the show! ***	
<i>June 1</i>	\$60.00
<i>July 1</i>	\$60.00
<i>August 1</i>	\$60.00
<i>August 1 (Band Shoes)</i>	\$35.00
<i>November 1</i>	\$135.00

***All balances are due by November 1, 2021.*** Make all checks payable to the Robertsdale High School Band. \$30 school fees are paid to the front office.

**\*Checks, Cashier's Checks, Money Orders, and Cash will be accepted\***

**\*\*Please make all checks and/or money orders payable to "RHS Band." Checks must include a phone number and physical address (Not a PO Box). \*\***

**\*\*\*Any positive balance from a previous year or ensemble will roll over into the following year or ensemble.**

## **Robertsdale High School Band Boosters**

The Robertsdale High School Band Boosters, is a not for profit organization created to assist the band and its staff. The Band Boosters assist with creating fundraising opportunities, getting volunteers/chaperones in place for various rehearsals/performances, creating social activities for the students, and assisting in any other way possible to add to the experience of each band member. Additional information can be found on our website. This organization ensures our fees remain as low as possible.

### **Current Board Members**

*President:* Jo Matias

*Vice President:* Rachel Martin

*Treasurer:* Jamie Haas

*Secretary:* Marie Williams

## **Mandatory Bear Card Fundraiser**

The Golden Bear Band "Bear Card" discount card is to be sold at \$10 each. Each member of the Golden Bear Band will be required to sell ten (10) Bear Card discount cards, or make a payment that is the equal amount of the ten (10) discount cards. The payment would be in the amount of \$100.

The discount cards will be checked out to each student and they are responsible for the cards unless the student decides to pay the \$100 in replacement of selling them. If all or any of the cards that are checked out to a student are lost, then the student will have to pay the difference of the lost or missing cards.

This mandatory fundraiser is an effort to not raise band obligations, and allow the Golden Bear Band to have the lowest obligations in our area.

If a student wants to check out more Bear Cards after they have sold the first ten (10), please see Mr. Hughes or Mr. Ramey.

***All Money/Cards will be due by November 1, 2021.***

**\*\*\*If a student does not sell ten (10) bear cards or chooses not to participate in the fundraiser, an obligation of \$100 will be applied to their account. \*\*\***

# **Robertsdale High School Band Make Up**

## **Assignment**

As per the County policy, students with an excused absence on the day of a rehearsal or performance may be permitted to submit a makeup assignment. Select an essay prompt from the below list. You are to write a 3 three-page (front and back) **handwritten** essay addressing your selected prompt. You have **three** school days from the day of your excused absence to submit this essay to Mr. Hughes or Mr. Ramey. (Example: If you were absent for three days, your three-day timeline would begin from your last absence.) After those three days have expired, the paper may not be submitted.

### **Prompts:**

- 1.What is a leader, and how do you obtain being an influential leader?
- 2.While not a sport, the band is a team activity. How and why is the individual important for the success of the team?
- 3.Write about a historical figure who was a great leader. What made him or her so influential?
- 4.Write about someone in your life who is a great leader. How does he or she inspire you?
- 5.What is your idea of a good person? How can individuals strive to be good people on a daily basis?



# **Attendance / Grading**

## **Attendance**

Attendance to ALL performances, after school rehearsals, parades, football games, play-off games, and special events are mandatory and graded.

## **Grading**

- Assessments 50% – All Performances, public performances, contests, and special events.
- Out of Class 15% – Practicing individual music, parts, work, and routines
  - Assessed by periodic pass-offs
- In Class 25% – During and after school practices
- Midterm/Final 5% – Will be based on either a performance or a written exam

Excessive or multiple absences could lead to the removal of the student from an ensemble or the band program entirely. This will be left up to the ruling of the band directors and administration of Robertsdale High School. The concept of the ensembles in the Golden Bear Band are only successful if there is 100% attendance. The art of music and band is very much a group effort where numerous students come together to create one musical concept or idea (ensemble).

It is the responsibility of the student to inform the directors of an excused absence that could conflict with band. The Golden Bear Band schedule is published months in advance and we do ask that you schedule around the band schedule. Excused/Unexcused absences will be determined by the band directors, administration, and student handbook.

Students are required to attend all after-school rehearsals. The absence from a rehearsal prior to a performance could lead to your removal from that performance. You are required to have attended/checked in to school the day of a trip or off campus performance to be eligible to travel/perform with the Golden Bear Band.

Students who miss performances and/or rehearsals will receive a zero (0). Make-up assignments/projects will be offered to students who have EXCUSED absences for any performances and/or rehearsals that they miss. Those students must turn in/complete the assignment within three (3) school days (taken from the BCBE student handbook).

Students who miss performances and/or rehearsals that are UNEXCUSED will receive a zero (0) with no chance to make up the grade.

\*\*\* Multiple absences could lead to your removal from an ensemble. \*\*\*

# **Robertsdale Golden Bear Band Visual Definitions and Guidelines**

The following information gives a clear, defined description on how to execute marching fundamentals. It gives a clear representation on what the uniform should look like and how the horns should be held in various positions. It also defines the marching terms that one should be familiar with by the time band camp starts. It is imperative that all students and student leaders teach and learn these fundamentals exactly as they are outlined and defined in this document. This will prevent variations in interpretation and execution that lead to a less refined performance.

## **Drill-Setting Terminology**

- On the Grid - refers to a drill spot that is on, or two or four steps away from any yard line
- Off the Grid - refers to a drill spot that is one or three steps away from any yard line
- Rank - a straight line of performers that stands shoulder-to-shoulder across the marching field
- File - a straight line of performers that runs in single file up and down the marching field
- Plus One - in a plus one rehearsal, all members of the marching group will complete a set of drill, plus one additional step in the next direction of the new set, followed by a freeze. For example, if the group were to run a sixteen-count drill move, the group would march sixteen steps and take one additional step of the next set followed by a freeze. If a note is to be played on that count, then the members will play that note and release it in time.
- Minus One - in a minus one rehearsal, all members of the marching group start a drill segment with the left foot in the position coming from the maneuver preceding the current drill segment.

## **Commands**

The following basic commands are common to most bands with slight variations. Please see below so you are familiar with the GBB's version of these commands. Later in the season, these commands will be given as whistle commands.

- Attention – command verbalized as “Band, Ten Hut!” The proper response is the vocal “One!” This command is given to the band to quickly come to the position of attention. (See Horn Carriage for specific instrument). There is no talking or movement permitted at attention.
- Parade Rest – this command is vocalized as “Band, Parade Rest!” The performer silently moves to a position of Parade Rest (see horn carriage below). The head should NOT be placed in a downward position. There is no talking in the Parade Rest position.
- Mark Time, Mark! - The order given to execute mark time.
- Subdivided count-off or “Duts” – When marking time before playing, when rehearsing a drill segment or starting to play a piece of music on the field, the Golden Bear Band vocalizes a subdivision in order to facilitate tempo accuracy and rhythmic precision. This is vocalized in time with the conductor's preparatory beat. This fundamental must be executed at the start of every drill segment in rehearsals.

- Horns Up – The tempo of the horns up command will always be equal to that of the music being played. When the conductor gives a count off the horn will come up on count one of the second measure (count FIVE of the count off)
- BAND! Horns Up! / BAND! Horns Down! – This alternate command is given to raise and lower instruments to playing position or to parade rest position.

#### How to Dress Forms

- Dressing Arcs - The three dress points are the two endpoints and the deepest point of the arc. Everyone should turn their full bodies and feet and face toward the center point of the imagined circle of which the arc is a part. No talking is required except occasional corrections by section leaders and staff.
- Dressing Circles - Everyone should turn their full bodies and feet to face toward the center point of the circle. No talking is required except occasional corrections by section leaders and staff.
- Dressing Diagonals - The foremost (closest to front sideline) and rearmost (furthest from front sideline) persons are the dress points. The foremost person turns and faces up the diagonal, away from the front sideline. All others in the diagonal face this person with their entire body and feet. The rearmost endpoint raises their hand or instrument in the air provide a reference point. Only the foremost person may instruct others in correcting their placement.
- Ready, Front! - This command always follows the "Dress Set, Dress" command. This command allows the group to go to Parade Rest and allows the section leaders time to fix forms or address any other issues.

#### Marching Fundamentals

- Mark Time – In a fluid motion, the heel should come up one inch from the ground on the "and" count, while keeping the toes connected to the ground. The heel will hit the ground on the downbeat. Avoid snapping motions, and do not lift the toes off of the ground.
- Forward March - The forward march consists of three main components:
  1. Equal weight distribution on both the left and right foot on the downbeat.
  2. A strong, lifted upper body
  3. Shoulders should be in line with hips (do not lean forward or backward)
  4. The Forward March technique should not be strained or forced. It should be as relaxed as possible while maintaining a strong presence in the upper body and a high toe. Toes should be up, but not so much that it sacrifices equal weight distribution. The heels should be close to the ground but should only barely make contact, brushing the tops of blades of grass. The legs should bend ever so slightly, especially on the "and" counts. There should be no "straight-legging" Avoid bicycle steps (lifting the heels off the ground), as well as locking of the legs.

- Backward March - The backward consists of three main components:
  1. Equal weight distribution on both the left and right foot on the downbeat
  2. A strong, lifted upper body
  3. Shoulder should be in line with hips (do not lean forward or backward).
  4. The backward march technique requires a good solid push from the opposite foot on the initial step-off. While moving backwards, it is best to land on the platforms of the feet (the ball of the foot directly behind the toes). The platforms should remain as close to the ground as possible. The legs should also bend slightly.
  
- Direction changes - Direction changes require a good amount of energy. Please familiarize yourself with the following techniques, as they may be slightly different than what you have been taught.
  1. Forward march directly into backward march - This applies when one should change direction from a forward march to a backward march. Please note that this same rule will apply to slides. In the last count of the previous set, point with the platform and toe of their foot into the ground and gravity should move center and then follow with a dead-beat (left foot) and resume with the right foot. Be sure to use the same backwards technique as explained above and try to achieve equal weight distribution on the downbeat.
  2. Backward march directly into forward march - When moving from backward to forward, plant the right platform into the ground, and re-step with the left foot landing on the heel. Again, try to achieve equal weight distribution and try to have a good first step by pushing with the planted foot. Also, try to keep the heel as low to the ground as possible.
  3. Moving Forward and then moving left or right - When moving forward, and then moving into a left or right slide always point with the platform slightly towards the next direction of travel. In this instance we will not plant the feet to change direction. Try to refrain from "pivoting" the foot in a jerking motion. As you move in the new direction, your foot will naturally pivot.
  4. Moving Backward and then moving left or right - When moving in a back march, and then moving into a left or right slide, plant the platform into the ground and take the next step in the new direction.

#### Horn Carriage

1. Parade Rest
2. Attention
3. Playing

### Field Organization & Expectations

- Performing members will organize themselves and their equipment by sections on the Front Sideline outside the 40-yard lines. All instruments, water jugs, and personal belongings (personal materials organized in a backpack) will be organized in "stacks" for uniformity.
- If rehearsing on concrete students will either "stack" their instruments in cases or place them on towels in a uniformed manner.
- All members will bring and use their Robertsdale Band issued Water Jug.
- All members will have and use their Dot Sheet for the entire duration of all rehearsals.
- All members will have their music with them (on the sideline) during rehearsals.
- Cell phones will be kept on the sideline or in the band room and will not be brought onto the rehearsal field.
- All members will run to the sideline when a break is given and will run back to the rehearsal field when the break is over.
- When a Director or Instructor calls out a member or section they will raise their hand to signify that they are listening. When a section or member is asked a question, they will provide feedback or affirmation of understanding.

Please visit

[www.robertsdalehighschoolband.com](http://www.robertsdalehighschoolband.com)

**Facebook Public Page:** Robertsdale High School Band

**Facebook Group:** Robertsdale High School Band

**Instagram:** @robertsdalehighschoolband

**Twitter:** @rhsbearband

### **GBB Remind**

Pick a way to receive messages for **Marching band**:

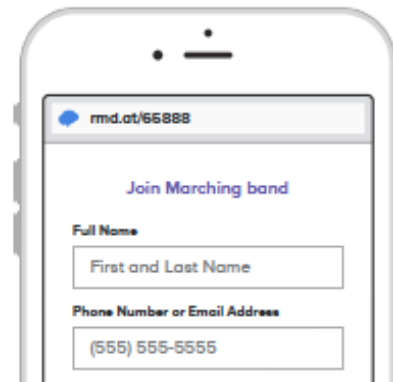
A

If you have a smartphone, get push notifications.

On your iPhone or Android phone, open your web browser and go to the following link:

[rmd.at/65888](http://rmd.at/65888)

Follow the instructions to sign up for Remind. You'll be prompted to download the mobile app.



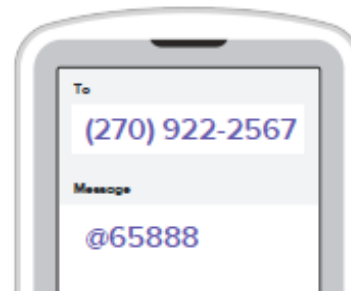
The illustration shows a smartphone screen with a web browser interface. The address bar displays 'rmd.at/65888'. The page title is 'Join Marching band'. Below the title, there are two input fields: 'Full Name' with a placeholder 'First and Last Name', and 'Phone Number or Email Address' with a placeholder '(555) 555-5555'.

B

If you don't have a smartphone, get text notifications.

Text the message @65888 to the number (270) 922-2567.

\* Standard text message rates apply.



The illustration shows a smartphone screen with a text messaging interface. The 'To' field displays '(270) 922-2567'. The 'Message' field contains '@65888'.

## **Robertsdale High School Golden Bear Band Summer**

### **Percussion Camp (ALL PERCUSSIONISTS)**

Percussion Camp: July 12<sup>th</sup> – 16<sup>th</sup> EVERYONE

- 8:00 A.M. – 11:30 A.M.
- <Lunch> On Your Own
- 1:00 P.M. – 5:00 P.M.

### **Guard Camp (ALL GUARD MEMBERS)**

Guard Camp: July 12<sup>th</sup> – 16<sup>th</sup>

- 1:30 P.M. – 5:30 P.M.

Weapons Only: July 19<sup>th</sup> – 23<sup>rd</sup>

- 12:00 P.M. – 3:00 P.M.

### **Winds Fundamentals and Music Camp (ALL WINDS)**

July 19<sup>th</sup> – 23<sup>rd</sup>

- 8:30 A.M. – 11:30 A.M.
- <Lunch>
- 1:00 P.M. – 5:00 P.M.

20 - 5:00pm – Senior Uniform Fitting

21 - 5:00pm – Junior Uniform Fitting

22 - 5:00pm – Sophomore Uniform Fitting

23 - 5:00pm – Freshman Uniform Fitting

## **GOLDEN BEAR BAND SUMMER CONTINUED**

### **FULL BAND CAMP (Winds, Percussion, and Guard)**

July 26<sup>th</sup> – July 30<sup>th</sup>

- 8:00am – 11:30am
- <Lunch break>
- 1:00pm – 4:30pm
- <Dinner break>
- 6:00pm – 8:30pm

August 3<sup>rd</sup>, 5<sup>th</sup>, 10<sup>th</sup>

- 3:30pm – 8:30pm

### **August 11th First Day of Classes**

- After School Practice Begins (3:00pm – 5:30pm every Tuesday and Thursday)

*\*\*\*All dates posted above are mandatory and required. \*\*\**

Please fill out the attached forms, as well as the online **"Intent and Medical Form"** located at:

<https://www.robertsdalehighschoolband.com>



# **2021-2022 Golden Bear Band Calendar**

## **August**

- 11 - First day of classes**
- 12 - After School Practice 3:00 – 5:30
- 17 - After School Practice 3:00 – 5:30
- 19 - After School Practice 3:00 – 5:30
- 20 - Away @ Foley**
- 24 - After School Practice 3:00 – 5:30
- 26 - After School Practice 3:00 – 5:30
- 27 - Home VS Elberta**
- 31 - After School Practice 3:00 – 5:30

## **September**

- 2 - After School Practice 3:00 – 5:30
- 3 - Home VS Citronelle**
- 7 - After School Practice 3:00 – 5:30
- 9 - After School Practice 3:00 – 5:30
- 10 - Away @ Spanish Ft**
- 14 - After School Practice 3:00 – 5:30
- 16 - After School Practice 3:00 – 5:30
- 17 - Home VS Gulf Shores/Homecoming**
- 21 - After School Practice 3:00 – 5:30
- 23 - After School Practice 3:00 – 5:30
- 24 - Away @ Satsuma**
- 28 - After School Practice 3:00-5:30
- 28 – **Baldwin County Band Jamboree @ 6:00 P.M.**
- 30 - After School Practice 3:00 – 5:30

## **October**

- 1 - Away @ Blount**
- 2 - Possible Contest TBA**
- 5 - After School Practice 3:00 – 5:30
- 7 - After School Practice 3:00 – 5:30
- 8 - Home VS McGill – Toolen\*\*\***
- 9 - Possible Contest TBA**
- 12 - After School Practice 3:00 – 5:30
- 14 - After School Practice 3:00– 5:30
- 15 – Home VS Saraland/Senior Night**
- 16 – Possible Contest TBA**
- 19 – After School Practice 3:00– 5:30
- 21 – After School Practice 3:00– 5:30
- 22 – Away @ Baldwin County**
- 23 - Possible Contest TBA**
- 26 - After School Practice 3:00– 5:30
- 28 - After School Practice 3:00– 5:30
- 30 - Possible Contest TBA**

## **November**

- TBA – Winter Guard Auditions Begin
- 2 - After School Practice 3:00– 5:30
- 4 - After School Practice 3:00– 5:30
- 5 – First Round Play Offs**
- TBA – BCBE Honor Band Auditions

## **December**

- 4 - Possible Christmas Parade**
- 9 – Holiday Concert**
- 10 - Possible Christmas Parade**
- 11 - Possible Christmas Parade**
- Rehearsals TBA \*

## **January**

- 4 - First Day of 2<sup>nd</sup> Semester
- TBA: All-State Auditions (Saraland HS)
- \*Mandatory after school rehearsals for MPA-TBA
- These will be published by November

## **February**

- 3-4 BCBE Honor Band
- \*Mandatory After School Rehearsals TBA
- \*\*We will march no more than five (5) Mardi Gras Parades-TBA
- \*\* We will host another indoor contest – Tentatively February 12, 19, or 26
- \*Mandatory after school rehearsals for MPA-TBA
- These will be published by November

## **March**

- \*Mandatory After School Rehearsals-TBA
- 10 – MPA Parent Preview Performance
- 14-18: Music Performance Assessment (Baker HS)
- We will only participate at one day of the assessment which is TBA
- 24-25 - District VII Honor Band
- \*TBA – GCGPC Championship @USA**
- March 30-April 3: Disney Trip

## **April**

- 4 - 8 Spring Break
- TBA- Guard Auditions 2021/22
- TBA- Percussion Auditions 2021/22
- 14-17: Alabama All-State Festival
- 28 – Spring Concert**
- TBA – Solo and Ensemble

## **May**

- TBA – Solo and Ensemble
- TBA– Graduation – will perform**
- TBA- Mandatory after school practice till 5:30
- Required for ALL winds and percussion

\*All performances and rehearsals are required and graded. \*

\*\*All dates/times are subject to change with the band directors' discretion with proper notice to the students and parents. Excessive absences could/will lead to your removal from an ensemble\*\*

Please contact Mr. Hughes at [lhughes@bcbe.org](mailto:lhughes@bcbe.org) or Mr. Ramey at [bramey@bcbe.org](mailto:bramey@bcbe.org) for additional information



**Parent, Student Agreement Form  
Golden Bear Band Program 2021-2022**

To Whom It May Concern:

I understand that my child \_\_\_\_\_, will be a participant in the Golden Bear Band for the 2021-2022 school year. I hereby grant permission for my child to attend all events in which the band will participate, including but not limited to out-of-town football games and field trips. I understand that my child will be transported to these events in some manner, i.e. school buses, charter buses, private transportation.

If private vehicles are used, they will be operated by individuals who will be advised to operate the vehicles with the care of a prudent driver in compliance with Alabama Rules of the Road. I further understand and agree that my child will be considered a guest rider under the laws of Alabama and that the school officials or chaperones will not be liable for any injuries to anyone or for the acts of others.

I understand that each trip will be chaperoned by Robertsdale High School Band parents and/or other adults. In the event of an accident I grant the chaperones the authority to give a physician permission to administer medical aid to my child. Any special health needs and/or allergies the teacher should be aware of are listed below:

\_\_\_\_\_

I understand that I shall contact the Director of Bands in writing should any of the above circumstances change.

Dated, this the \_\_\_\_\_ day of \_\_\_\_\_, 20\_\_\_\_.

Student Name: \_\_\_\_\_

Birthdate: \_\_\_\_\_

Parent/ Guardian Name: \_\_\_\_\_

Day Phone: \_\_\_\_\_ Evening Phone: \_\_\_\_\_

Parent/Guardian Email: \_\_\_\_\_

Student Email: \_\_\_\_\_

Insurance Co. Name: \_\_\_\_\_

Group Number: \_\_\_\_\_ Contract Number: \_\_\_\_\_

**Person to Contact in the Event of an Emergency, if Above Cannot be Reached:**

Name: \_\_\_\_\_ Phone: \_\_\_\_\_

\_\_\_\_\_  
Signature of Parent/Guardian